

DELIVERED BY:



2025-2027 MORGAN COUNTY COMMUNITY HEALTH IMPROVEMENT PLAN

PUBLISHED SEPTEMBER 2025



Public Health
Prevent. Promote. Protect.
MORGAN COUNTY HEALTH DEPT.

TABLE OF CONTENTS

NOTE FROM MORGAN COUNTY HEALTH DEPARTMENT.....	3
ACKNOWLEDGMENTS.....	4
INTRODUCTION.....	5
WHAT IS A COMMUNITY HEALTH IMPROVEMENT PLAN (CHIP)?.....	5
OVERVIEW OF THE PROCESS.....	6
DEFINING THE MORGAN COUNTY SERVICE AREA.....	7
MORGAN COUNTY SERVICE AREA AT-A-GLANCE.....	8
KEY DATA ON PRIORITY HEALTH NEEDS FOR THE MORGAN COUNTY SERVICE AREA.....	9
STEP 1: PLAN AND PREPARE FOR THE COMMUNITY HEALTH IMPROVEMENT PLAN.....	10
STEPS 2: DEVELOP GOALS, OBJECTIVES & IDENTIFY INDICATORS.....	12
PRIORITY HEALTH NEEDS FOR THE MORGAN COUNTY SERVICE AREA.....	17
STEPS 3 & 4: CONSIDER & SELECTS APPROACHES TO ADDRESS PRIORITY HEALTH NEEDS.....	18
PRIORITY AREA 1: NUTRITION AND PHYSICAL HEALTH.....	19
PRIORITY AREA 2: MENTAL HEALTH.....	20
CURRENT RESOURCES ADDRESSING THE PRIORITY HEALTH NEEDS.....	21
STEPS 5-8: INTEGRATE, DEVELOP, ADOPTS & SUSTAIN COMMUNITY HEALTH IMPROVEMENT PLAN.....	22
NEXT STEPS.....	23
EVALUATION OF IMPACT.....	23
HEALTH NEEDS THAT WILL NOT BE ADDRESSED.....	23
APPENDICES.....	24
APPENDIX A: PHAB CHIP CHECKLIST.....	25
APPENDIX B: REFERENCES.....	26

A NOTE FROM MORGAN COUNTY HEALTH DEPARTMENT



Morgan County Health Department (MCHD) strives to bring together people and organizations to improve community wellness. The community health assessment (CHA) process is one way we can live out our mission. In order to fulfill this mission, we must be intentional about understanding the health issues that impact residents and work together to create a healthy community.

A primary component of creating a healthy community is assessing its needs and prioritizing those needs for impact. In 2024, MCHD partnered to conduct a comprehensive Community Health Assessment (CHA) to identify primary health issues, current health status, and other health needs. These findings were then used to develop a Community Health Improvement Plan (CHIP) to describe the response to the needs identified in the CHA report.

The 2025-2027 Morgan County Community Health Improvement Plan (CHIP) would not have been possible without the help of numerous community organizations, acknowledged on the following pages. It is vital that assessments such as this continue, so partners know where to direct resources and how to use them in the most advantageous ways.

The goals of public health can only be accomplished through community members' commitment to themselves and to each other. MCHD believes that together, Morgan County can be a thriving community of health and well-being at home, work, school, and play.

Importantly, this report could not exist without the contributions of individuals in the community who participated in interviews and completed the community member survey. MCHD is grateful for those individuals who are committed to the health of the community, and took the time to share their health concerns, needs, behaviors, praises, and suggestions for future improvement.

Sincerely,

A handwritten signature in black ink that reads "Richard D. Clark, MD". The signature is written in a cursive style.

Dr. Richard D. Clark, MD

Health Commissioner/Medical Director
Morgan County Health Department

ACKNOWLEDGEMENTS



This Community Health Improvement Plan (CHIP) was made possible thanks to the collaborative efforts of Morgan County Health Department (MCHD), partners, and community residents. Their contributions, expertise, time, and resources played a critical part in the completion of this assessment.

MCHD WOULD LIKE TO RECOGNIZE THE FOLLOWING ORGANIZATIONS FOR THEIR CONTRIBUTIONS TO THIS REPORT:

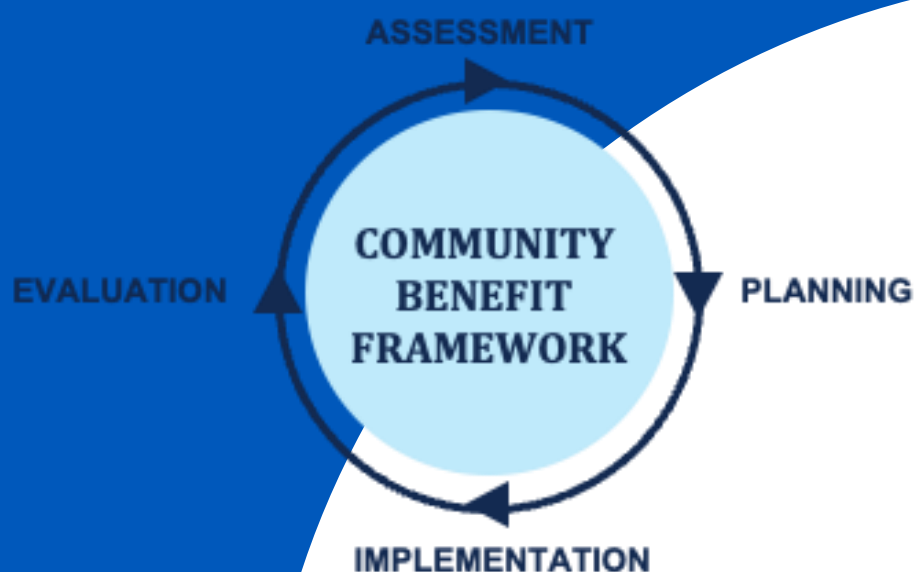
Allwell Behavioral Health Services	Morgan County Health Department
Area Agency on Aging Region 9	Morgan County Job and Family Services
Board of Health	Morgan County Library
Chamber of Commerce	Morgan County Office - Ohio State University (OSU) Extension
Family and Children First Council	Morgan County Office on Aging
Full Circle Recovery Services	Morgan Local Schools
Genesis HealthCare System	Muskingum Valley Health Center
Malta & McConnellsville Fire Department	Ohio Medical Aid Services
Mental Health and Recovery Services Board	Shrivers Pharmacy
Morgan County Board of Developmental Disabilities	South East Area Transit (SEAT)
Morgan County Commissioners	



The 2025-2027 CHIP report was prepared by Moxley Public Health, LLC, (www.moxleypublichealth.com) an independent consulting firm that works with hospitals, health departments, and other community-based nonprofit organizations both domestically and internationally to conduct Community Health (Needs) Assessments (CHNA/CHAs) and Implementation Strategies/Community Health Improvement Plans (CHIPs).

INTRODUCTION

WHAT IS A COMMUNITY HEALTH IMPROVEMENT PLAN (CHIP)?



A **Community Health Improvement Plan (CHIP)** is part of a framework that is used to guide community benefit activities, policy, advocacy, and program-planning efforts. For health departments, the Community Health Improvement Plan (CHIP) fulfills the mandates of the Public Health Accreditation Board (PHAB).

OVERVIEW OF THE PROCESS



In order to develop a Community Health Improvement Plan (CHIP), Morgan County Health Department followed a process that included the following steps:

STEP 1: Plan and prepare for the CHIP.

STEP 2: Develop goals/objectives and identify indicators to address health needs.

STEP 3: Consider approaches/strategies to address prioritized needs, health disparities, and social determinants of health.

STEP 4: Select approaches with community partners.

STEP 5: Integrate CHIP with community partner and health department plans.

STEP 6: Develop a written CHIP.

STEP 7: Adopt the CHIP.

STEP 8: Update and sustain the CHIP.

Within each step of this process, the guidelines and requirements of both the state and federal governments are followed precisely and systematically.

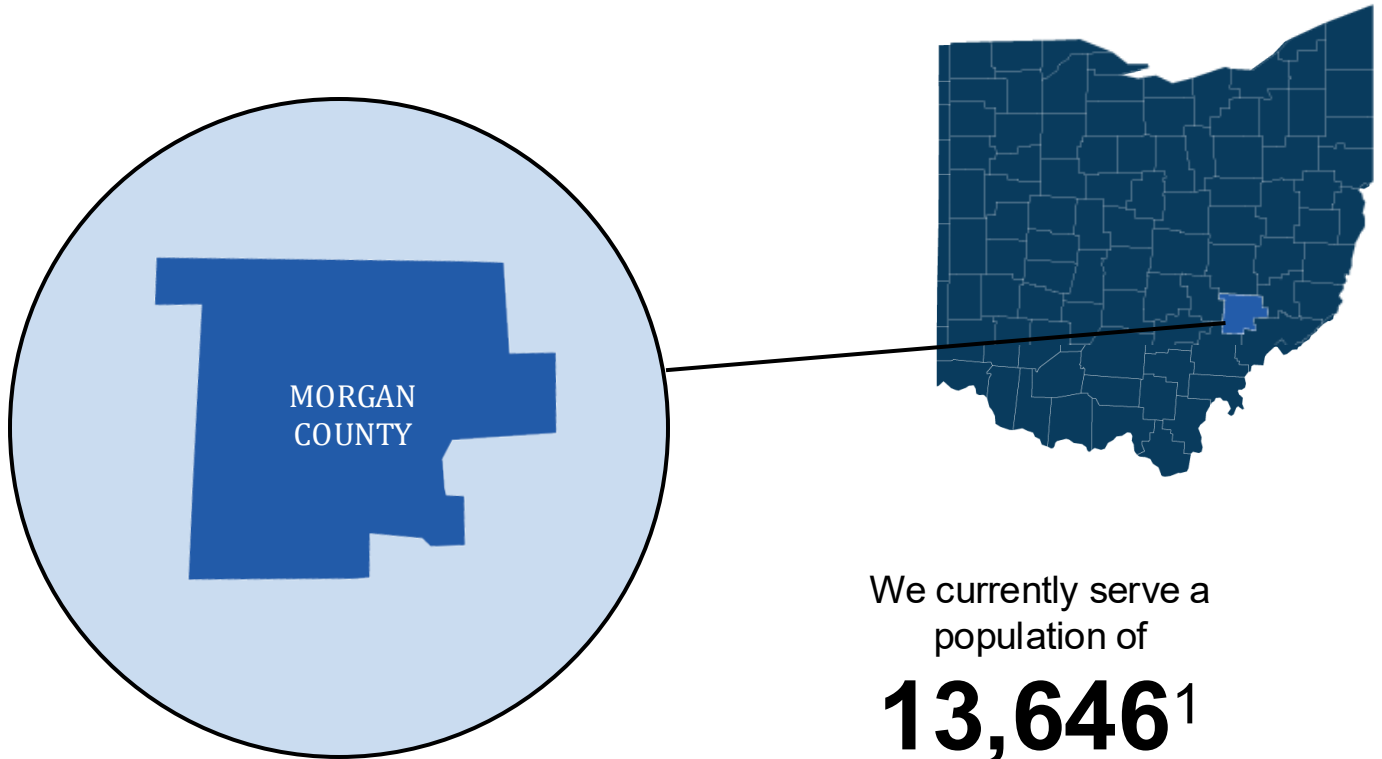
THE 2025-2027 MORGAN COUNTY CHIP MEETS ALL PHAB REGULATIONS.



DEFINING THE MORGAN COUNTY SERVICE AREA



For the purposes of this report, Morgan County Health Department defines their primary service area as being made up of Morgan County, Ohio.

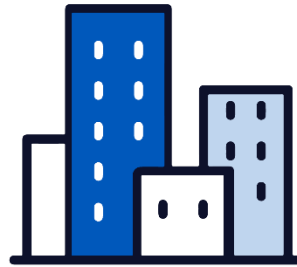
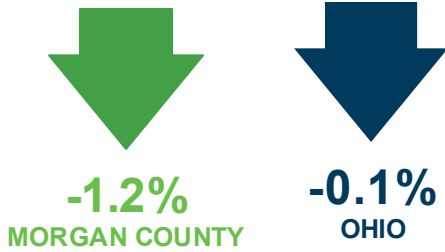


MORGAN COUNTY SERVICE AREA
GEOGRAPHIC LOCATION
McConnelsville
Glouster
Malta
Stockport
Chesterhill

MORGAN COUNTY SERVICE AREA

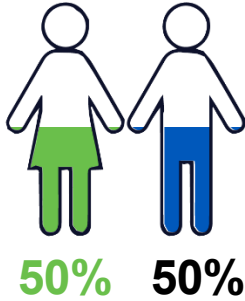
AT-A-GLANCE

Morgan County's population is **13,646**. The population of Ohio **remained relatively the same** in the past 3 years, while Morgan County's **slightly decreased**.¹



Morgan County is ranked **61st of 88** ranked counties in Ohio, according to social, economic, and health factors (with 1 being the best), placing it in the **bottom third** of the state's counties.²

The % of males and females is **approximately equal**.³



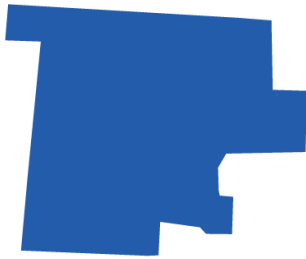
of Morgan County residents are **veterans**, slightly higher than the state average.⁴



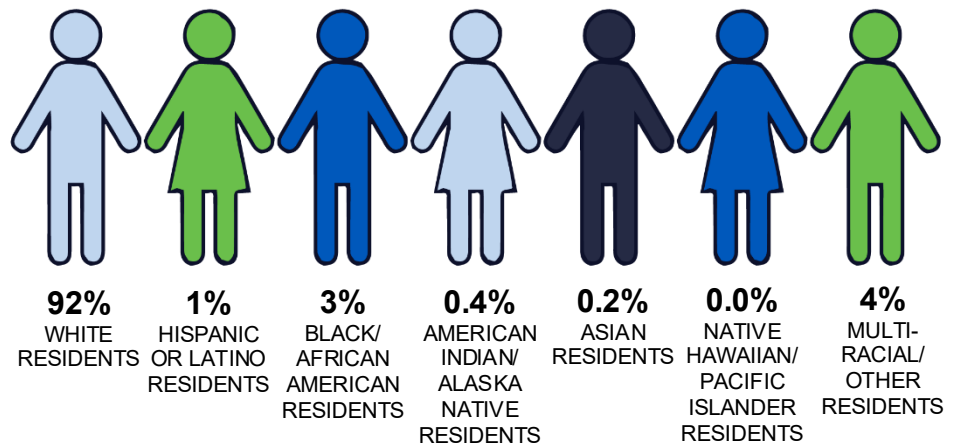
Youth ages 0-19 and seniors 65+ make up **43% of the population**

In Morgan County, nearly **1 in 5 residents are age 65+**.³

The **majority (92%)** of the population in Morgan County identifies as **White** as their only race.³



98% of the population in Morgan County **speaks only English**. **0.5%** are **foreign-born**.^{4,5}



The life expectancy in Morgan County is **74.2 years**, which is **1.4 years shorter** than the state of Ohio.⁶



1 in 185 Morgan County residents will **die prematurely**, which is approximately the same as the Ohio state rate.⁶

PRIORITY HEALTH NEEDS FOR MORGAN COUNTY



1



NUTRITION AND PHYSICAL HEALTH

45% of Morgan County residents are obese, higher than the state rate of 38%.⁶

37% of community survey respondents say that **social and recreational activities** (e.g. clubs, senior and youth activities, community spaces, etc.) are lacking.

2



MENTAL HEALTH

Mental health and access to mental healthcare was the **#2** ranked health outcome in the community member survey, with over **76%** of respondents selecting this option.

Only **29%** of respondents to the 2024 community member survey requiring mental or behavioral health services received all the care they needed.



STEP 1 PLAN AND PREPARE FOR THE COMMUNITY HEALTH IMPROVEMENT PLAN (CHIP)



IN THIS STEP, MORGAN COUNTY HEALTH DEPARTMENT:

- DETERMINED WHO WOULD PARTICIPATE IN THE DEVELOPMENT OF THE CHIP
- ENGAGED BOARD AND EXECUTIVE LEADERSHIP
- REVIEWED THE COMMUNITY HEALTH ASSESSMENT



Public Health
Prevent. Promote. Protect.
MORGAN COUNTY HEALTH DEPT.



PLAN AND PREPARE FOR THE 2025-2027 MORGAN COUNTY COMMUNITY HEALTH IMPROVEMENT PLAN (CHIP)

Secondary and primary data were collected to complete the 2024 Morgan County Community Health Assessment (available at: <https://morganpublichealth.org/community-health-assessment>). Secondary data were collected from a variety of local, county, and state sources to present community demographics, social determinants of health, healthcare access, birth characteristics, leading causes of death, chronic disease, health behaviors, mental health, substance use, and preventive practices. The analysis of secondary data yielded a preliminary list of significant health needs, which then informed primary data collection.

Primary data were collected through key informant interviews with **10** experts from various organizations serving Morgan County, and included leaders and representatives of medically underserved, low-income, and minority populations, or local health or other departments or agencies. A *community member survey* was distributed via a QR code and link with **156** responses. The survey responses (from community members) were used to prioritize the health needs, answer in-depth questions about the health needs in the county, and to identify health disparities present in the community. Finally, there were **3** focus groups held across Morgan County, representing a total of **16** community members from priority populations. The primary data collection process was designed to validate secondary data findings, identify additional community issues, solicit information on disparities among subpopulations, ascertain community assets potentially available to address needs, and prioritize health needs. More detail on methodology can be found in the 2024 Morgan County Community Health Assessment.

“

The improvement plan (CHIP) deals with the “how and when” of addressing needs. While the community health assessment considers the “who, what, where and why” of community health needs, the CHIP takes care of the how and when components.

- *Catholic Health Association*

”

STEP 2

DEVELOP GOALS AND OBJECTIVES AND IDENTIFY INDICATORS FOR ADDRESSING COMMUNITY HEALTH NEEDS



IN THIS STEP, MORGAN COUNTY HEALTH DEPARTMENT:

- DEVELOPED GOALS FOR THE COMMUNITY HEALTH IMPROVEMENT PLAN (CHIP) BASED ON THE FINDINGS FROM THE COMMUNITY HEALTH ASSESSMENT
- SELECTED INDICATORS TO ACHIEVE GOALS



Public Health
Prevent. Promote. Protect.
MORGAN COUNTY HEALTH DEPT.

OVERVIEW

OF THE PROCESS (CONTINUED)



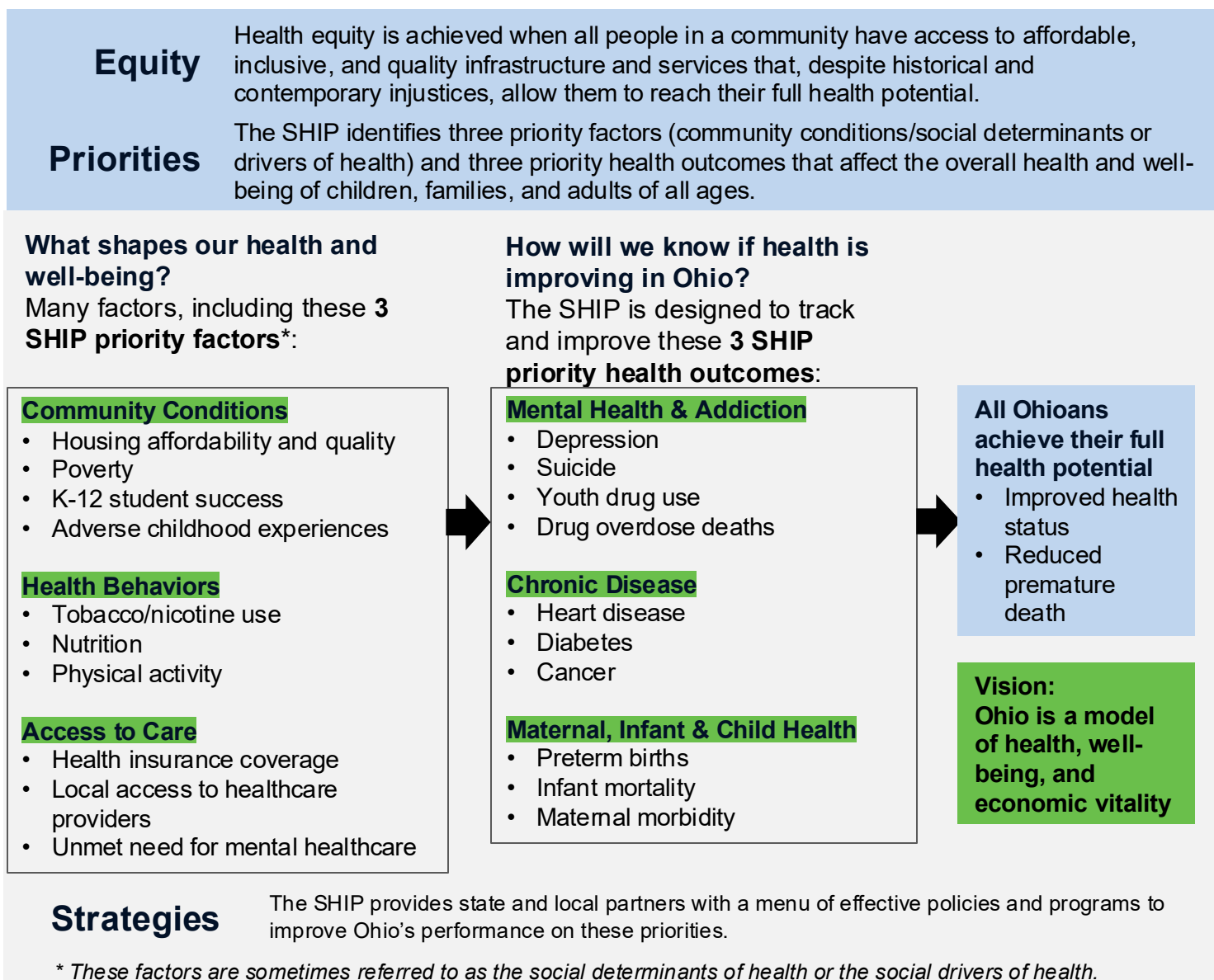
Ohio Department of Health (ODH) Requirements

The following image shows the framework from ODH that this report followed while also adhering to federal requirements and the community's needs.

Morgan County Health Department (MCHD) desired to align with the priorities and indicators from ODH. To do this, they used the following guidelines when prioritizing the health needs of their community.

First, MCHD used the same language as the state of Ohio when assessing the factors and health outcomes of their community in the 2024 Morgan County Community Health Assessment (CHA).

Figure 1: Ohio State Health Improvement Plan (SHIP) Framework



* These factors are sometimes referred to as the social determinants of health or the social drivers of health.

Next, with the data findings from the community health assessment process, Morgan County Health Department used the following guidelines/worksheet to choose priority health factors and priority health outcomes (worksheet/guidelines continued to next page).

ALIGNMENT WITH PRIORITIES AND INDICATORS

STEP 1: Identify at least one priority factor and at least one priority health outcome.

PRIORITY FACTORS	PRIORITY HEALTH OUTCOMES
<input checked="" type="checkbox"/> Community Conditions	<input checked="" type="checkbox"/> Mental Health and Addiction
<input type="checkbox"/> Health Behaviors	<input checked="" type="checkbox"/> Chronic Disease
<input checked="" type="checkbox"/> Access to Care	<input type="checkbox"/> Maternal and Infant Health

STEP 2: Select at least 1 indicator for each identified priority factor.

PRIORITY FACTORS	
COMMUNITY CONDITIONS	
TOPIC	INDICATOR NAME
Housing Affordability and Quality	<input type="checkbox"/> Affordable and Available Housing Units
Poverty	<input type="checkbox"/> Child Poverty
	<input type="checkbox"/> Adult Poverty
K-12 Student Success	<input type="checkbox"/> Chronic Absenteeism (K-12 students)
	<input type="checkbox"/> Kindergarten Readiness
Adverse Childhood Experiences	<input type="checkbox"/> Adverse Childhood Experiences (ACEs)
	<input type="checkbox"/> Child Abuse and Neglect
Food Insecurity	<input checked="" type="checkbox"/> Food Insecurity
Environmental Conditions	<input type="checkbox"/> Air Quality
	<input type="checkbox"/> Water Quality
HEALTH BEHAVIORS	
TOPIC	INDICATOR NAME
Tobacco/Nicotine Use	<input type="checkbox"/> Adult Smoking
	<input checked="" type="checkbox"/> Youth All-Tobacco/Nicotine Use
Nutrition	<input checked="" type="checkbox"/> Fruit Consumption
	<input checked="" type="checkbox"/> Vegetable Consumption
Physical Activity	<input checked="" type="checkbox"/> Child Physical Activity
	<input checked="" type="checkbox"/> Adult Physical Activity
ACCESS TO CARE	
TOPIC	INDICATOR NAME
Health Insurance Coverage	<input checked="" type="checkbox"/> Uninsured Adults
	<input checked="" type="checkbox"/> Uninsured Children
Local Access to Healthcare Services	<input checked="" type="checkbox"/> Primary Care Health Professional Shortage Areas
	<input checked="" type="checkbox"/> Mental Health Professional Shortage Areas
Unmet Need for Mental Healthcare	<input checked="" type="checkbox"/> Youth Depression Treatment Unmet Need
	<input checked="" type="checkbox"/> Adult Mental Healthcare Unmet Need

ALIGNMENT WITH PRIORITIES AND INDICATORS (CONTINUED)

STEP 2 (continued): Select at least 1 indicator for each identified priority health outcome.

PRIORITY HEALTH OUTCOMES	
MENTAL HEALTH AND ADDICTION	
TOPIC	INDICATOR NAME
Depression	<input checked="" type="checkbox"/> Youth Depression
	<input checked="" type="checkbox"/> Adult Depression
Suicide Deaths	<input checked="" type="checkbox"/> Youth Suicide Deaths
	<input checked="" type="checkbox"/> Adult Suicide Deaths
Youth Drug Use	<input checked="" type="checkbox"/> Youth Alcohol Use
	<input checked="" type="checkbox"/> Youth Marijuana Use
Drug Overdose Deaths	<input checked="" type="checkbox"/> Unintentional Drug Overdose Deaths
CHRONIC DISEASE	
TOPIC	INDICATOR NAME
Heart Disease	<input checked="" type="checkbox"/> Coronary Heart Disease
	<input checked="" type="checkbox"/> Premature Death – Heart Disease
	<input checked="" type="checkbox"/> Hypertension
Diabetes	<input checked="" type="checkbox"/> Diabetes
Cancer	<input checked="" type="checkbox"/> Cancer
MATERNAL AND INFANT HEALTH	
TOPIC	INDICATOR NAME
Preterm Births	<input type="checkbox"/> Preterm Births
Infant Mortality	<input type="checkbox"/> Infant Mortality
Maternal Morbidity/Mortality	<input type="checkbox"/> Severe Maternal Morbidity/Mortality

ADDRESSING THE HEALTH NEEDS



The 2024 Community Health Assessment (CHA) identified the following significant health needs from an extensive review of the primary (community survey, interviews, and focus groups) and secondary data (existing data). The significant health needs were ranked as follows through the community member survey (156 responses from community members).

COMMUNITY CONDITIONS RANKING FROM COMMUNITY MEMBER SURVEY	
#1 Income/poverty and employment	34%
#2 Internet/Wi-Fi access	30%
#3 Access to primary healthcare	29%
#4 Access to specialist healthcare	25%
#5 Access to childcare	23%
#6 Adverse childhood experiences	21%
#7 Food insecurity	20%
#8 Housing and homelessness	19%
#9 Access to mental healthcare	14%
#10 Overweight and obesity	14%
#11 Crime and violence	9%
#12 Access to public/safe water and other utilities	8%
#13 Education	8%
#14 Preventive care and practices	8%
#15 Transportation	7%
#16 Physical health/exercise	5%
#17 Access to dental/oral healthcare	5%
#18 Access to social engagement and volunteer opportunities	3%
#19 Health literacy	3%
#20 Access to vision healthcare	3%
#21 Health insurance coverage	3%
#22 Nutrition	3%
#23 Environmental conditions	1%

HEALTH OUTCOMES RANKING FROM COMMUNITY MEMBER SURVEY	
#1 Substance use disorder	81%
#2 Mental health	76%
#3 Chronic diseases	55%
#4 Tobacco and nicotine use/smoking/vaping	40%
#5 Suicide	18%
#6 Maternal, infant, and child health	14%
#7 Injuries	6%
#8 HIV/AIDS and Sexually Transmitted Infections (STIs)	1%

ADDRESSING THE HEALTH NEEDS



From the significant health needs, Morgan County Health Department chose health needs that considered the health department and community partners' capacity to address community needs, the strength of community partnerships, and those needs that correspond with the health department and community partners' priorities.

THE TWO PRIORITY HEALTH NEEDS THAT WILL BE ADDRESSED IN THE 2025-2027 IMPROVEMENT PLAN (CHIP) ARE:

- Priority Area 1: Nutrition and Physical Health**
- Priority Area 2: Mental Health**



STEPS 3 & 4

CONSIDER AND SELECT APPROACHES/STRATEGIES TO ADDRESS PRIORITIZED NEEDS, HEALTH DISPARITIES, AND SOCIAL DETERMINANTS OF HEALTH WITH COMMUNITY PARTNERS



IN THESE STEPS, MORGAN COUNTY HEALTH DEPARTMENT:

- SELECTED APPROACHES/
STRATEGIES TO ADDRESS THE
MORGAN COUNTY PRIORITIZED
HEALTH NEEDS, HEALTH
DISPARITIES, AND SOCIAL
DETERMINANTS OF HEALTH
- DEVELOPED A WRITTEN
COMMUNITY HEALTH
IMPROVEMENT PLAN (CHIP)
REPORT



Public Health
Prevent. Promote. Protect.
MORGAN COUNTY HEALTH DEPT.

#1

PRIORITY AREA NUTRITION AND PHYSICAL HEALTH



Includes chronic disease, community education and outreach, tobacco & nicotine use, access to healthcare (telehealth)

STRATEGIES

Increase knowledge of available healthcare facilities by creating an up-to-date list of all healthcare providers.

Develop a smoke-free campus policy to reduce tobacco use and second-hand smoke inhalation.

Develop a mobile services policy to ensure that health department services are taken into the community to provide equal access.

Promote physical activity and fitness by hosting a free community 5k event (walk, crawl, run) with numerous participants within the next 12 months.

PARTNERS

Muskingum Valley Health Center, Genesis HealthCare System, Allwell Behavioral Health Services, Job and Family Services, Morgan County Health Department (MCHD), Health Departments, Path, Integrated Services, Morgan Behavioral Health Choices, New Hope, Women, Infants, and Children (WIC), Eye Care Associates

MCHD, Morgan County Commissioners, Morgan County Health Coalition, Genesis Primary Care

MCHD, Morgan County Health Coalition

MCHD, high school coaches, Job and Family Services

PRIORITY POPULATIONS

All populations

All populations

Adults and youth

All populations

DESIRED OUTCOMES OF STRATEGIES



Physical activity opportunities



Sedentary youth and adults



Tobacco use and second-hand smoke



Education and access to healthcare resources

OVERALL IMPACT OF STRATEGIES



Access to primary care



Quality of life



Overweight and obesity



Chronic disease



Premature mortality



Physical health

ALL MORGAN COUNTY SERVICE AREA RESIDENTS ACHIEVE THEIR FULL HEALTH POTENTIAL

#2

PRIORITY AREA MENTAL HEALTH

Includes suicide, substance use & abuse, community education and outreach



STRATEGIES

Increase community outreach for local mental health services by reaching 200 community members and providing a comprehensive list of services offered in Morgan County within the next 12 months.

Create a senior support system for mental health by recruiting 20 volunteers and pairing them with 50 elderly individuals for regular interactions and educational activities within the next 12 months.

Increase vape/nicotine-free education to young teens and parents.

PARTNERS

Emergency Medical Services and Sheriffs, Muskingum Valley Health Center, Genesis HealthCare System, Job and Family Services, Prosecutor, Manor, Ohio State Mental and Behavioral Health

Nursing homes (activity directors), volunteers, senior center, Morgan County Senior Task Force

Morgan Local School, Library, Opera House, Local businesses

PRIORITY POPULATIONS

All age groups

Senior citizens

Pre-teens and teens

DESIRED OUTCOMES OF STRATEGIES

↑ Education and awareness on mental health ↑ Access to mental health and substance abuse care and support ↓ Mental health stigma ↓ Adverse childhood experiences (ACEs)

OVERALL IMPACT OF STRATEGIES

↑ Mental health ↑ Quality of life ↑ Access to healthcare ↓ Mental health and substance abuse ER visits and hospitalizations ↓ Substance abuse ↓ Suicides ↓ Mental distress and depression

ALL MORGAN COUNTY SERVICE AREA RESIDENTS ACHIEVE THEIR FULL HEALTH POTENTIAL

CURRENT RESOURCES

ADDRESSING PRIORITY HEALTH NEEDS

MORGAN COUNTY



Information was gathered on assets and resources that currently exist in the community. This was done using feedback from the community and an overall assessment of the service area. While this list strives to be comprehensive, it may not be complete.

Access to Healthcare

Eye Care Associates
 Genesis Primary Care
 Muskingum Valley Health Centers
 Muskingum Valley Health Centers Dental Clinic
 MVHC (Muskingum Valley Health Centers) Mobile Unit
 Shrivvers Pharmacy

Community & Social Services

Buckeye Hills Regional Council
 Lunch Buddies
 Malta & McConnellsville Fire Department
 Morgan County Board of Developmental Disabilities
 Morgan County Chamber of Commerce
 Morgan County Children's Services
 Morgan County Commissioners
 Morgan County Courthouse
 Morgan County Health Department
 Morgan County Herald
 Morgan County Juvenile Court
 Morgan County Library
 Morgan County Office on Aging
 Morgan County Private Water Health Fair
 Morgan County Senior Center
 Morgan County Sheriff's Office
 Morgan County United Ministries
 Morgan County Veterans Services
 Morgan County Wellness Coalition
 Survivor Advocacy Outreach Program (SAOP)
 The Community Action Program Corporation of Washington-Morgan Counties
 Thrive Drive
 Transitions Inc.

Education

Little Steps Early Learning Center
 Morgan Local School District
 Play and Learn Center

Employment

Work Force Development Center

Food Insecurity

Commodity Supplemental Food Program (CSFP)
 Global Meals
 Homestyle Direct
 Lutheran Social Service of Central Ohio - mobile food pantry
 Malta United Methodist Church - mobile food pantry
 Meals on Wheels
 Mom's Meals
 Morgan County Community Gardens
 Morgan County Senior Center - congregate meals
 Morgan County United Ministries - food pantry
 Nutrition for Longevity, Inc.
 Senior Farmer's Market Nutrition Program - Buckeye Hills Regional Council
 Southeast Ohio Regional Food Bank and Kitchen

Housing & Homelessness

Mary's House
 Morgan County Fair Housing
 Morgan Metropolitan Housing Authority

Mental Health & Addiction

Allwell Behavioral Health Services
 Cedar Ridge Behavioral Health Solutions
 Full Circle Recovery
 Integrated Services for Behavioral Health - McConnellsville
 Morgan Behavioral Health Choices
 Morgan County Suicide Prevention Coalition
 New Hope Creation Center

Nutrition & Physical Health

Kroger
 Little Dog Deli
 Meyers Specialty Market
 Parks and Recreation - Morgan County
 Save A Lot
 The Barracks Fitness Center
 Village Fitness

Transportation

Morgan County Public Transit
 Region 8 Mobility Solution Center

STEPS 5-8

INTEGRATE, DEVELOP, ADOPT, AND SUSTAIN COMMUNITY HEALTH IMPROVEMENT PLAN (CHIP)



IN THIS STEP, MORGAN COUNTY HEALTH DEPARTMENT WILL:

- INTEGRATE CHIP WITH COMMUNITY PARTNER AND HEALTH DEPARTMENT PLANS
- ADOPT THE CHIP
- UPDATE AND SUSTAIN THE CHIP



Public Health
Prevent. Promote. Protect.
MORGAN COUNTY HEALTH DEPT.

MORGAN COUNTY

NEXT STEPS



The Community Health Assessment (CHA) and this resulting Community Health Improvement Plan (CHIP) identify and address significant community health needs. This CHIP explains how Morgan County Health Department (MCHD) plans to address the selected priority health needs identified by the CHA.

This Community Health Improvement Plan (CHIP) report was adopted by MCHD leadership in May 2025.

This report is widely available to the public on MCHD website:

<https://morganpublichealth.org/about-us/>

Written comments on this report are welcomed and can be made by emailing:
Richard.clark@morgancounty-oh.gov

EVALUATION OF IMPACT

MCHD will monitor and evaluate the programs and actions outlined above. We anticipate the actions taken to address significant health needs will improve health knowledge, behaviors, and status, increase access to care, and overall help support good health. MCHD is committed to monitoring key indicators to assess impact. Our reporting process includes the collection and documentation of tracking measures, such as the number of people reached/served and collaborative efforts to address health needs. A review of the impact of MCHD's actions to address these significant health needs will be reported in the next scheduled CHA.

ADDITIONAL HEALTH NEEDS NOT DIRECTLY ADDRESSED

Since MCHD cannot directly address all the health needs present in the community, we will concentrate our resources on those health needs where we can effectively impact our region given our areas of focus and expertise. Taking existing organization and community resources into consideration, MCHD will not directly address the remaining health needs identified in the CHA, including but not limited to income/poverty and employment, adverse childhood experiences, housing and homelessness, internet/Wi-Fi access, crime and transportation, environmental conditions, injuries, and HIV/AIDS and STIs. We will continue to look for opportunities to address community needs where we can make a meaningful contribution. Community partnerships may support other initiatives that MCHD cannot independently lead in order to address the other health needs identified in the 2024 CHA.

APPENDIX A PUBLIC HEALTH ACCREDITATION BOARD (PHAB) CHECKLIST: IMPROVEMENT PLAN (CHIP)

MEETING THE PHAB REQUIREMENTS FOR THE CHIP

The PHAB Standards & Measures serve as the official guidance for PHAB national public health department accreditation and include requirements for the completion of Community Health Assessments (CHAs) and CHIPs for local health departments. The following page demonstrates how this CHIP meets the PHAB requirements.



APPENDIX B: PHAB COMMUNITY HEALTH IMPROVEMENT PLAN (CHIP) REQUIREMENTS CHECKLIST



PUBLIC HEALTH ACCREDITATION BOARD (PHAB) REQUIREMENTS FOR CHIPs			
YES	PAGE #	PHAB REQUIREMENTS CHECKLIST	NOTES/ RECOMMENDATIONS
✓	4	<p>MEASURE 5.2.1 A: Engage partners and members of the community in a community health improvement process.</p> <p>1. A collaborative process for developing the community health improvement plan (CHIP), which includes:</p> <ul style="list-style-type: none"> a. A list of participating partners involved in the CHIP process. Participation must include: i. At least two organizations representing sectors other than public health. ii. At least two community members or organizations that represent populations that are disproportionately affected by conditions that contribute to health risks or poorer health outcomes. b. Review of information from the community health assessment. c. Review of the causes of disproportionate health risks or health outcomes of specific populations. d. Process used by participants to select priorities. <p>The CHIP process must address the jurisdiction as described in the description of Standard 5.2.</p>	
✓	5-17		
✓	18-20		
✓	10-17		
✓	18-20	<p>MEASURE 5.2.2 A: Adopt a community health improvement plan.</p> <p>1. A community health improvement plan (CHIP), which includes all of the following:</p> <ul style="list-style-type: none"> a. At least two health priorities. b. Measurable objective(s) for each priority. c. Improvement strategy(ies) or activity(ies) for each priority. i. Each activity or strategy must include a timeframe and a designation of organizations or individuals that have accepted responsibility for implementing it. ii. At least two of the strategies or activities must include a policy recommendation, one of which must be aimed at alleviating causes of health inequities. d. Identification of the assets or resources that will be used to address at least one of the specific priority areas. e. Description of the process used to track the status of the effort or results of the actions taken to implement CHIP strategies or activities. <p>The CHIP must address the jurisdiction as described in the description of Standard 5.2.</p>	<p>A detailed work plan (living document) has been developed that included strategies, SMART objectives, annual activities, indicators, partners, and priority populations.</p>
✓	18-20		
✓	18-20		
✓	18-20		
✓	21-23		
✓	23		

APPENDIX B REFERENCES



Public Health
Prevent. Promote. Protect.
MORGAN COUNTY HEALTH DEPT.

APPENDIX B: **REFERENCES**

¹ U.S. Census Bureau, Decennial Census, P1, 2018-2022. [Http://Data.Census.Gov/](http://Data.Census.Gov/)

² County Health Rankings & Roadmaps, 2023 Data Set, <http://www.Countyhealthrankings.org/>

³ U.S. Census Bureau, American Community Survey, Dp05, 2018-2022 5-Year Estimate. [Http://Data.Census.Gov/](http://Data.Census.Gov/)

⁴ U.S. Census Bureau, American Community Survey, Dp02, 2018-2022 5-Year Estimate. [Http://Data.Census.Gov/](http://Data.Census.Gov/)

⁵ U.S. Census Bureau, Decennial Census, S1601 American Community Survey, 2018-2022 5-Year Estimate. [Http://Data.Census.Gov/](http://Data.Census.Gov/)

⁶ County Health Rankings & Roadmaps, 2024 Data



Public Health
Prevent. Promote. Protect.
MORGAN COUNTY HEALTH DEPT.



www.moxleypublichealth.com
stephanie@moxleypublichealth.com