

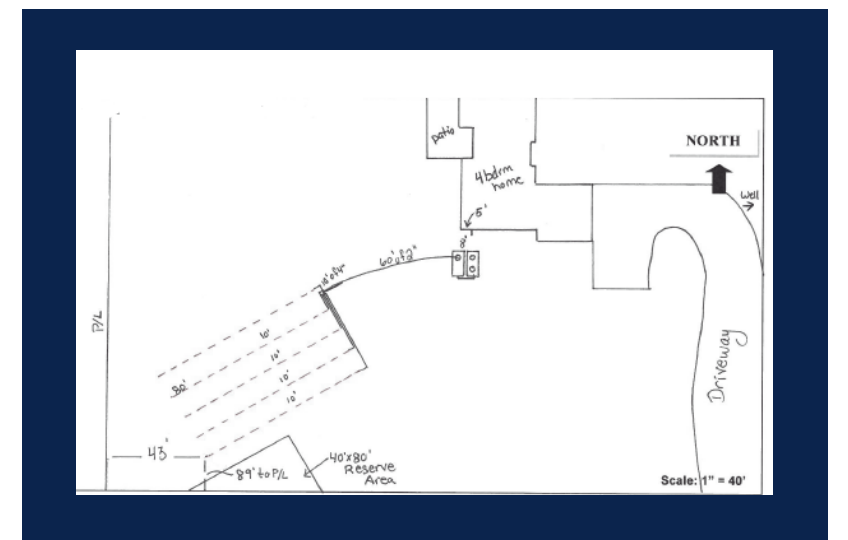


Public Health
Prevent. Promote. Protect.
MORGAN COUNTY HEALTH DEPT.

Inspection and Maintenance of Septic Tank Effluent Filters

1 Locate Your Septic Tank and Determine Outlet Orientation

The local health department may be able to provide you with a diagram of your septic system. Locate the septic tank lid closest to your leach field. Most lids are visible above ground however, depending on the age of your system you may have to carefully uncover the lid with a shovel. For help locating your tank/lids contact MCHD or a septic contractor.



2 Remove Screws in Riser Lid and Lift Lid(s)

Most newer septic systems are equipped with risers. It is necessary to remove the lid on the riser to reach and remove the septic tank lid.



3 Locate Outlet Baffle and Remove Effluent Filter

Effluent filters are located in a plastic baffle known as a "sanitary tee". Carefully pull upwards on the handle located on the top of the filter. Ensure proper personal protective equipment is in-use during this process, including eye protection.



4 Clean Effluent Filter and Place Back in Sanitary Tee

Approximately every six months, remove and clean your effluent filter using a hose. Remove as many solid accumulations as possible. Insert the effluent filter back in to the sanitary tee and gently push downward until filter is properly seated in tee.



5 Replace Riser Lid(s) and Insert Screws

Place riser box lid back on riser. Ensure proper alignment and insert screws. Record your maintenance on a log and keep in a safe place.



**FOR ASSISTANCE OR GUIDANCE WITH THIS PROCESS,
CONTACT OUR OFFICE OR A REGISTERED SEPTIC INSTALLER
WWW.MORGANPUBLICHEALTH.ORG**